



MONTHLY MEMBERSHIP PROGRESS REPORT

District 16 N

Results as of: 3/31/2017

GMT: ED LECIUS

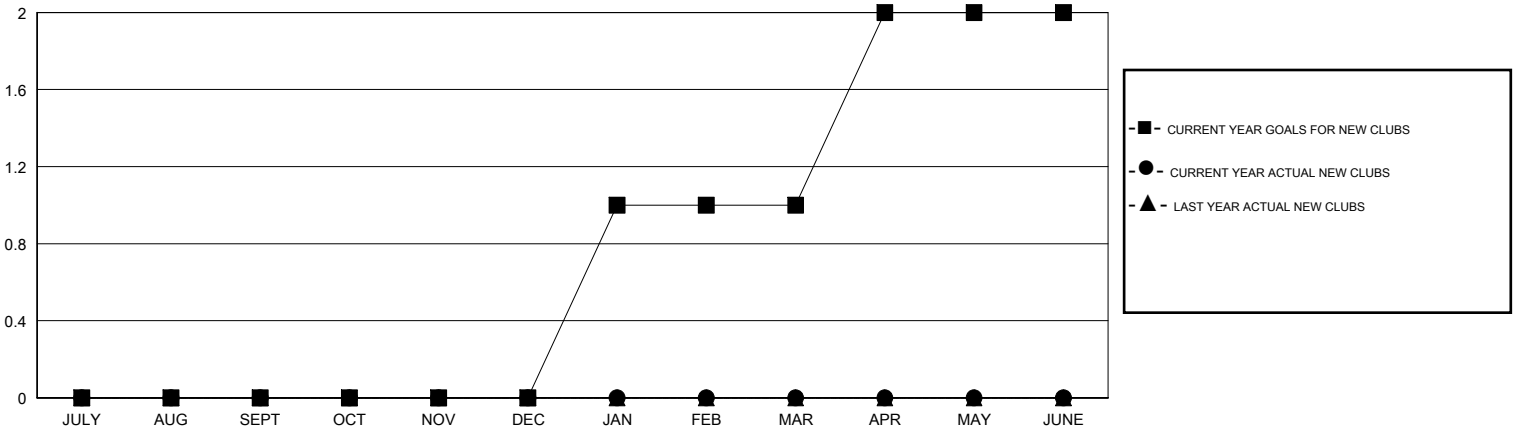
LOCATION NEW JERSEY

GMT CA

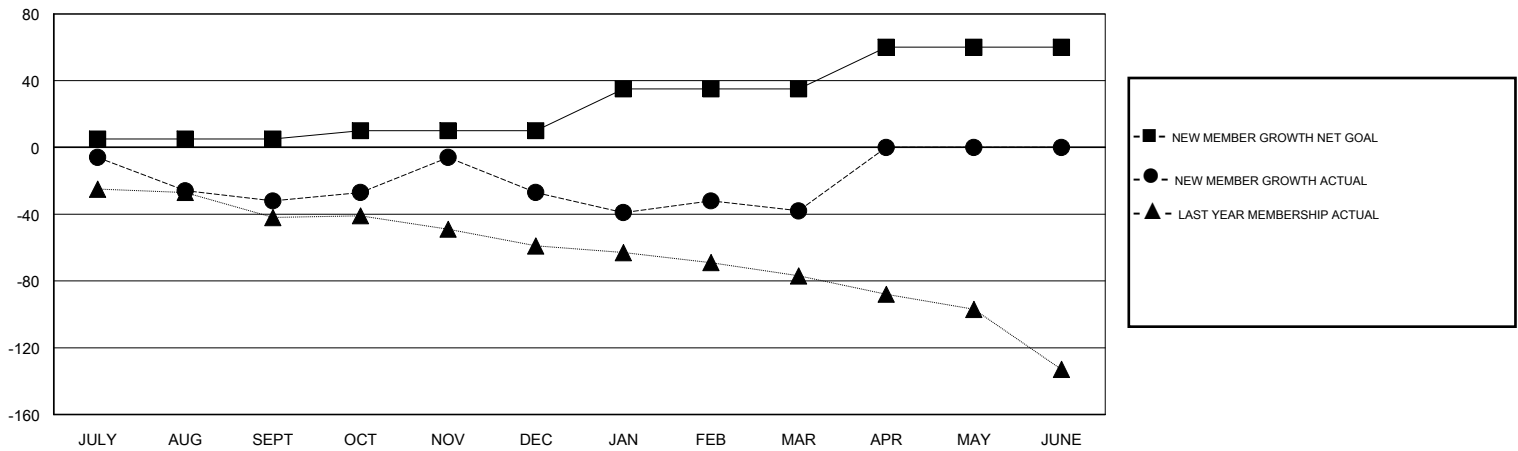
Clubs			
RESULTS FOR 2016-2017			
QUARTER	NEW CLUB GOAL	NEW CLUBS	DROPPED CLUBS
JULY/AUG/SEPT	0	0	0
OCT/NOV/DEC	0	0	0
JAN/FEB/MAR	1	0	0
APR/MAY/JUNE	1	0	0

Members			
RESULTS FOR 2016-2017			
QUARTER	NEW MEMBER GROWTH NET GOAL (not reinstated or transfers)	NEW MEMBER GROWTH ACTUAL (not reinstated or transfers)	DROPPED MEMBERS ACTUAL (including transfers)
JULY/AUG/SEPT	5	19	51
OCT/NOV/DEC	5	42	37
JAN/FEB/MAR	25	22	33
APR/MAY/JUNE	25	0	0

GOALS AND ACTUAL NEW CLUBS CUMULATIVE



GOALS AND ACTUAL MEMBERS CUMULATIVE



DROPPED CLUBS: 0	31 CLUBS OF 61 ADDED 1 OR MORE NEW MEMBERS	<u>GENDER DISTRIBUTION</u>	
DROPPED MEMBERS		MALE	1,124 (73.75%)
DECEASED	15	FEMALE	400 (26.25%)
CLUB CANCELLED	0	TOTAL FAMILY UNIT MEMBERS	218
OTHER	106	FAMILY MEMBERS PAYING HALF DUES	114
TOTAL	121		

[CLICK HERE FOR CUMULATIVE MEMBERSHIP DATA](#)